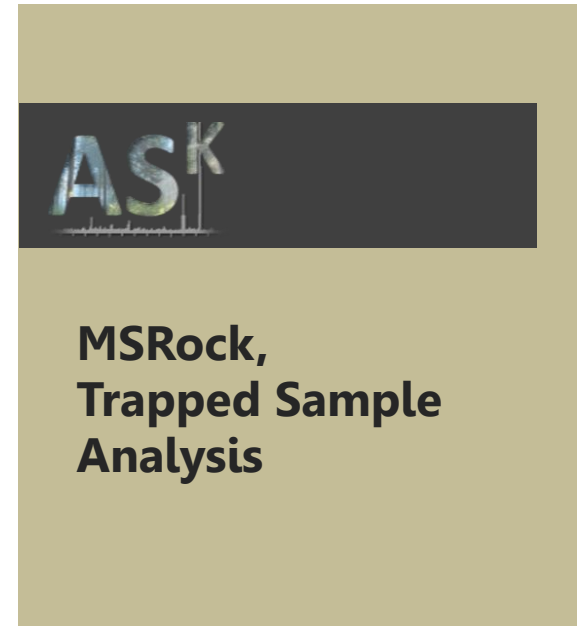
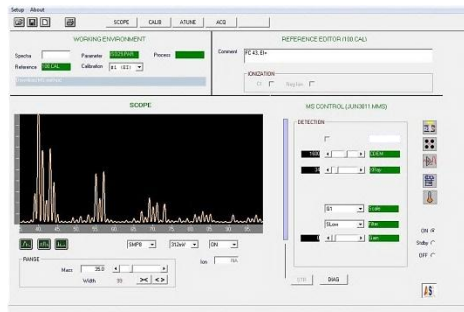


Mass Detector

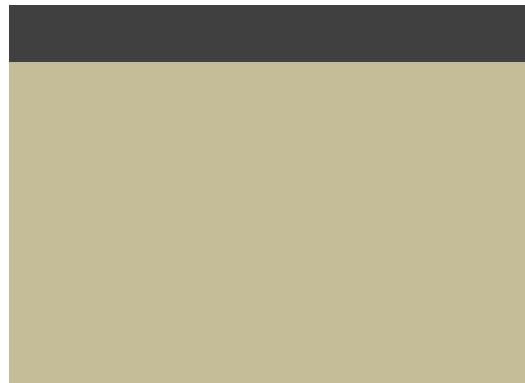
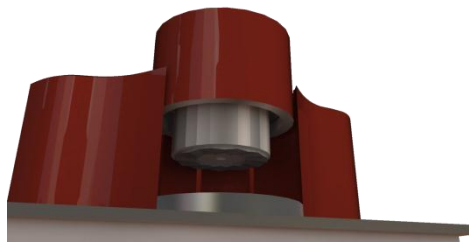
The mass spectrometer adds another dimension to your rock sample analysis.



Ask Us.

Rock Interface

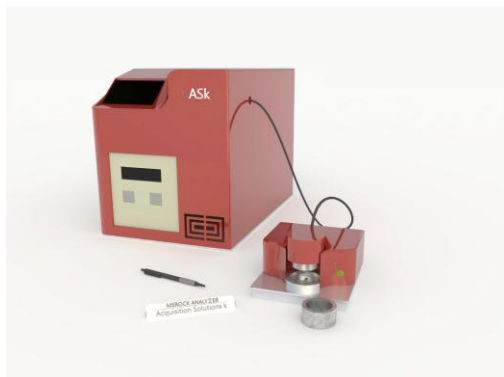
Rugged, and designed for field analysis.



Tel: 713.586.9951

MSRock

This Mass spectrometer is interfaced with a rock crushing system that liberate the trapped fluid or gases, in rock cuttings or core samples. The mass spectrometer comes with good mass resolution, good sensitivity and good stability for the detection of hydrocarbons, helium, CO₂, etc... This mass spectrometer is based on rugged and proven quadruple technology. It can scan C1-C10 in 100's millisecond. This MS combines key features for mud-logging applications such as: speed, LAS file format and WITS data stream. By analysis of the cuttings at Well-Site, it makes a great tool for mud logging.



Features:

Fast scan of C1-C10 Hydrocarbons. The speed and mass stability of this instrument allows the reliable measurement of isotopic ratios. Automatic mass calibration and reporting. Input serial WITS into database and export of the results to CSV/LAS/TXT/WITS.

Specifications:

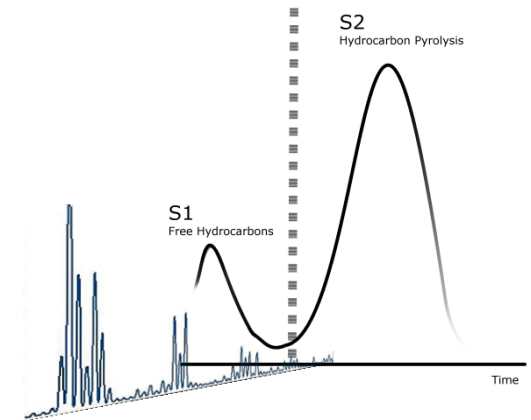
Mass Range: 2 to 150amu
Mass Definition: 48 Point/1amu (0.02 amu)

Sensitivity: ppm
Dimensions: 17"x21.5"x13"
Weight: 22 Kg

Optional:
Mass range 2 to 250amu,
Scan speed 0.1sec/100amu

Requirements:

Power 110V/60Hz 500W



Total ion current and mass spectra / Temperature program for separation of Hydrocarbons

Contact Us

Phone: 713.586.9951

E-mail address: acqsol@gmail.com

Location: Texas